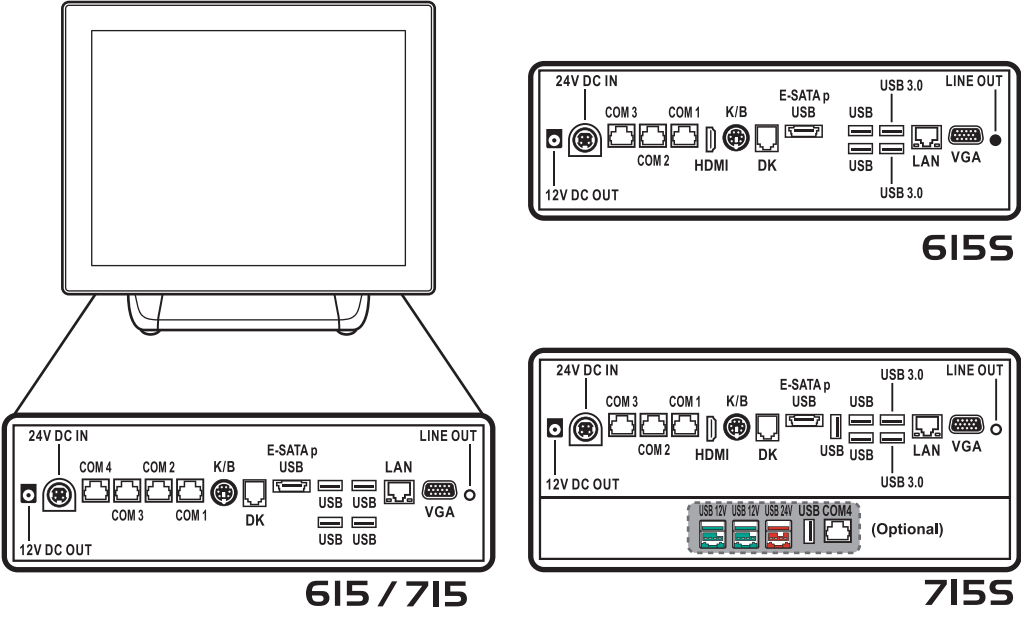
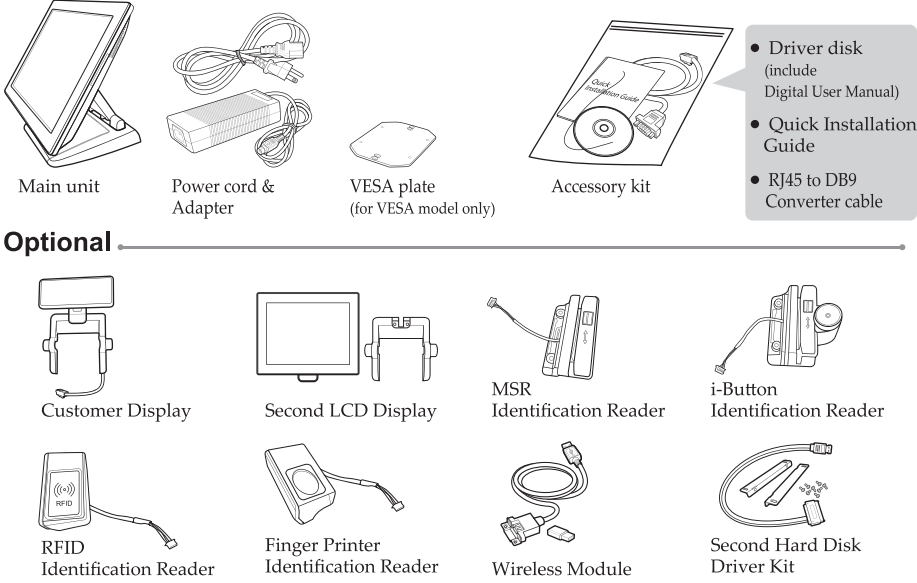


# Overview



## Unpacking

Before setting up the POS Terminal, check the package which contains following items. If any of the items is missing or damaged, contact your vendor immediately.



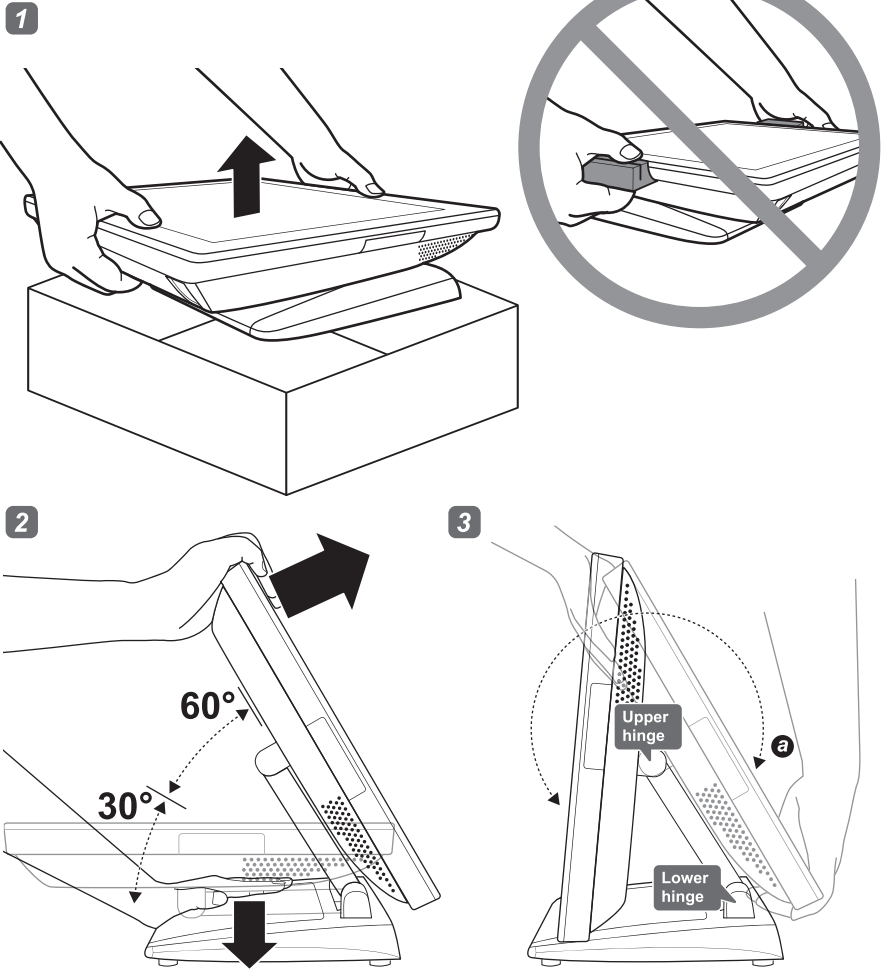
# Warning & Attention

- Before getting started, read these instructions and save them for later reference.
- Turn off the POS Terminal before cleaning. Clean with dry cloth only. Do not spray any liquid cleaner directly on the screen.
- The power outlet socket used to plug in power cord must be located near the system and easily accessible.
- Make sure the voltage of the power source is set correctly before connecting the POS Terminal to power outlet.
- If the POS Terminal shares an extension cord with other devices, make sure the total loading of the devices plugged into the extension cord does not exceed the extension cord's maximum loading.
- Do not expose the power cord, extension cord and power outlet to moisture or traffic intensive walkways.
- Install the POS Terminal on a sturdy and reliable surface to prevent damage caused by dropping.
- The operating system must be first loaded before installing any software into the POS Terminal.
- Disconnect the power cord from the POS terminal before any installation of internal components. Make sure both the POS terminal and the external devices are turned off. A sudden surge of power may damage sensitive components. Also make sure the POS terminal is properly grounded.
- During installation of any internal components, be sure to ground yourself and discharge any static electricity. Most electronic components are highly sensitive to static electric charge. Use a grounding wrist strap and place all electronic components in any static-shielded devices. If a wrist-grounding strap is not available, ground yourself by touching an unpainted piece of metal.
- The openings on the POS Terminal enclosure are for the cabin ventilation to prevent the POS terminal from overheating. DO NOT COVER THE VENTILATION OPENINGS.
- The brightness of the flat panel display will decrease after using over long periods of time. However, hours of use will vary depending on the application environment.
- If the POS Terminal is equipped with a touch panel, avoid using sharp or metallic objects to operate the touch panel. Scratches on the touch panel may cause mal-calibration or serious damage to the panel.
- The LCD panel display is not resistive to shock or vibration. When disassembling the POS Terminal, make sure the LCD panel is properly and securely installed.

# Glamor Series

## Quick Installation Guide V1.0

### Adjust the system stand



**NOTE 1:** Carefully tilt the unit backwards, some force is required.

**NOTE 2:** Lift the head to the 1st detent where the screen will lock in the 30-degree position. Then the 2nd detent will lock in 60-degree position.

**NOTE 1:** Because the stand joints are tight, you might need to exert some force to maneuver the Terminal.

**NOTE 2:** Make sure always rotate around the head to the position "a" before adjusting the upper hinge.

# Technical Support

- To enter the **Boot Menu**, press **F10**.
- To set CMOS default, press **F2** to enter **CMOS setting** and load optimized defaults
- Refer to **User Manual** for other technical information and FAQs. If the problems are not resolved, contact your local vendor for further support and provide them with the information below: **product name, product serial number, and detailed description of your problem.**

## Safety notices

### Before You Proceed

- Read safety notice and User Manual carefully before using the product.
- Keep the box and packaging in case the product needs to be shipped in the future.
- Follow the product and warning label instructions.
- Any changes or modifications that do not follow the instructions in this manual will void this product's warranty.

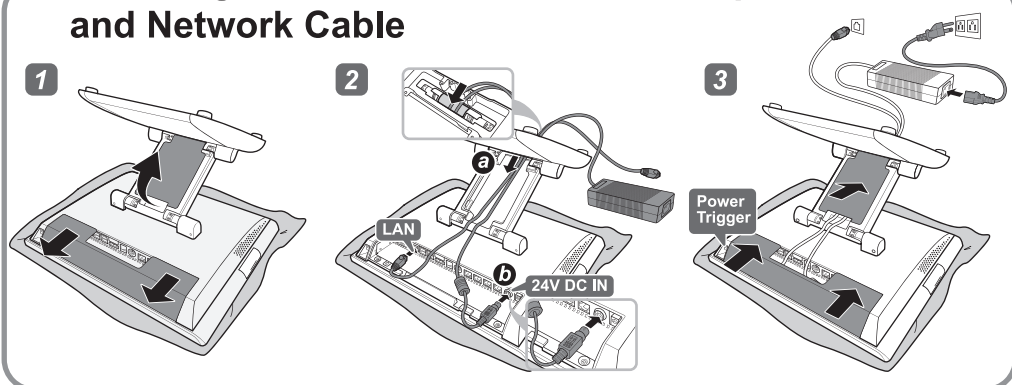
### Power Supply Safety Notice

- To avoid electric shocks, disconnect the power cord from the electrical outlet before relocating the system.
- Make sure the voltage of the power outlet conforms within voltage range of the terminal. Failure to comply may cause the electric shock or damage to the terminal. If you are not sure of the electricity voltage that you are using, contact your local electricity company.
- To avoid fire or electric shocks, do not overload electric power outlets.
- Protect the power cord from being walked on or pinched particularly at plug, convenience receptacles, and the point where they exit from the apparatus.

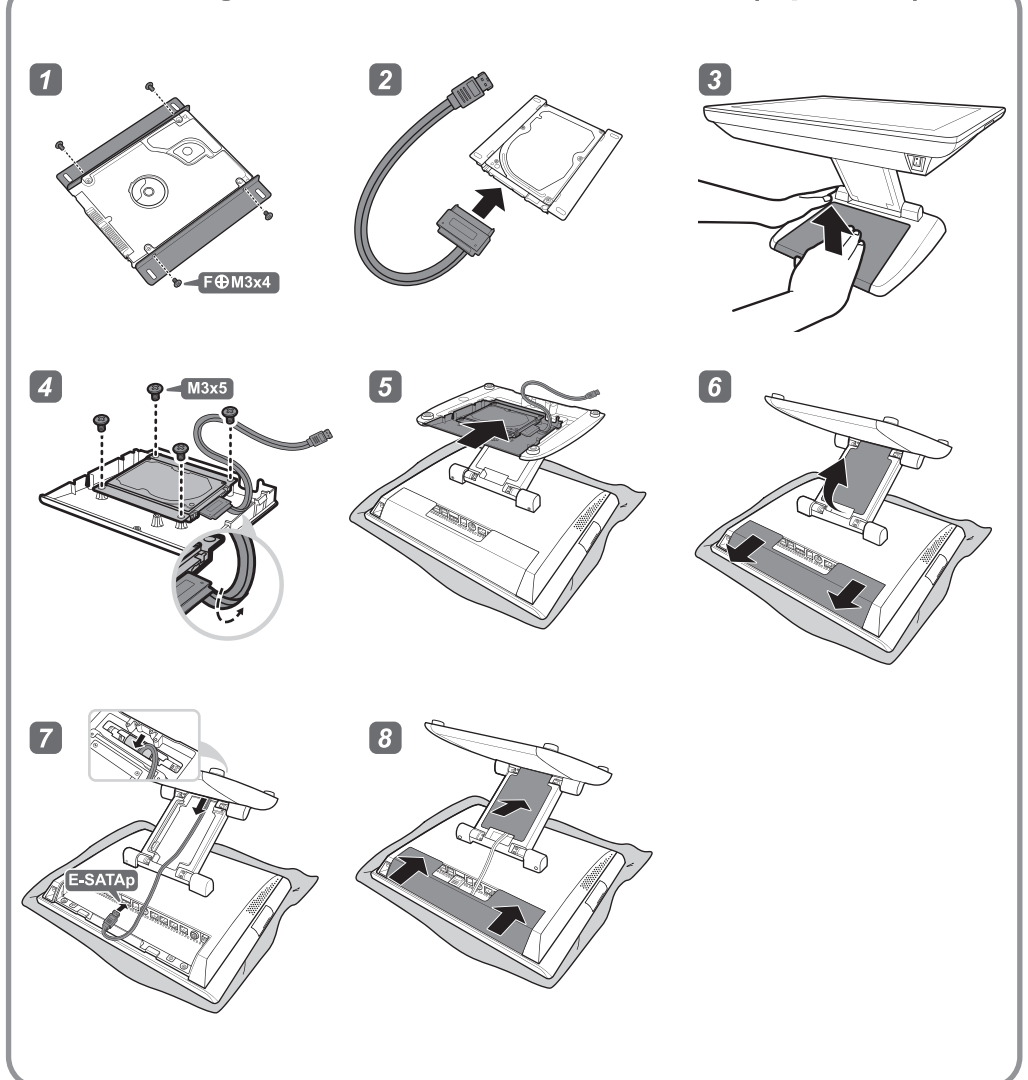
### NOTICE

The version of these drivers and manuals is subject to change without notice. For update, please contact your local agent.

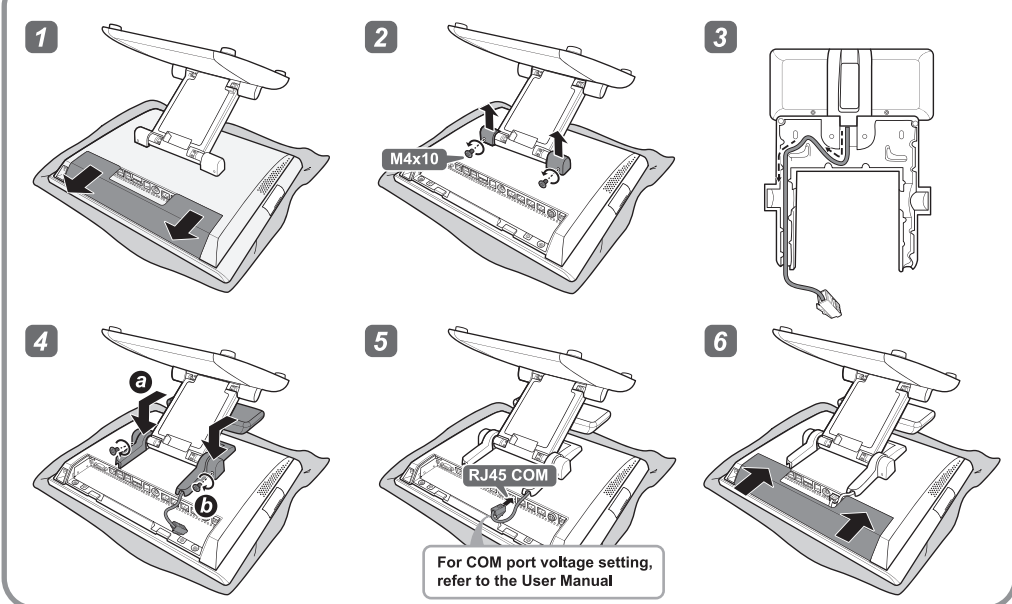
### Installing the Power Cord, Power Adapter, and Network Cable



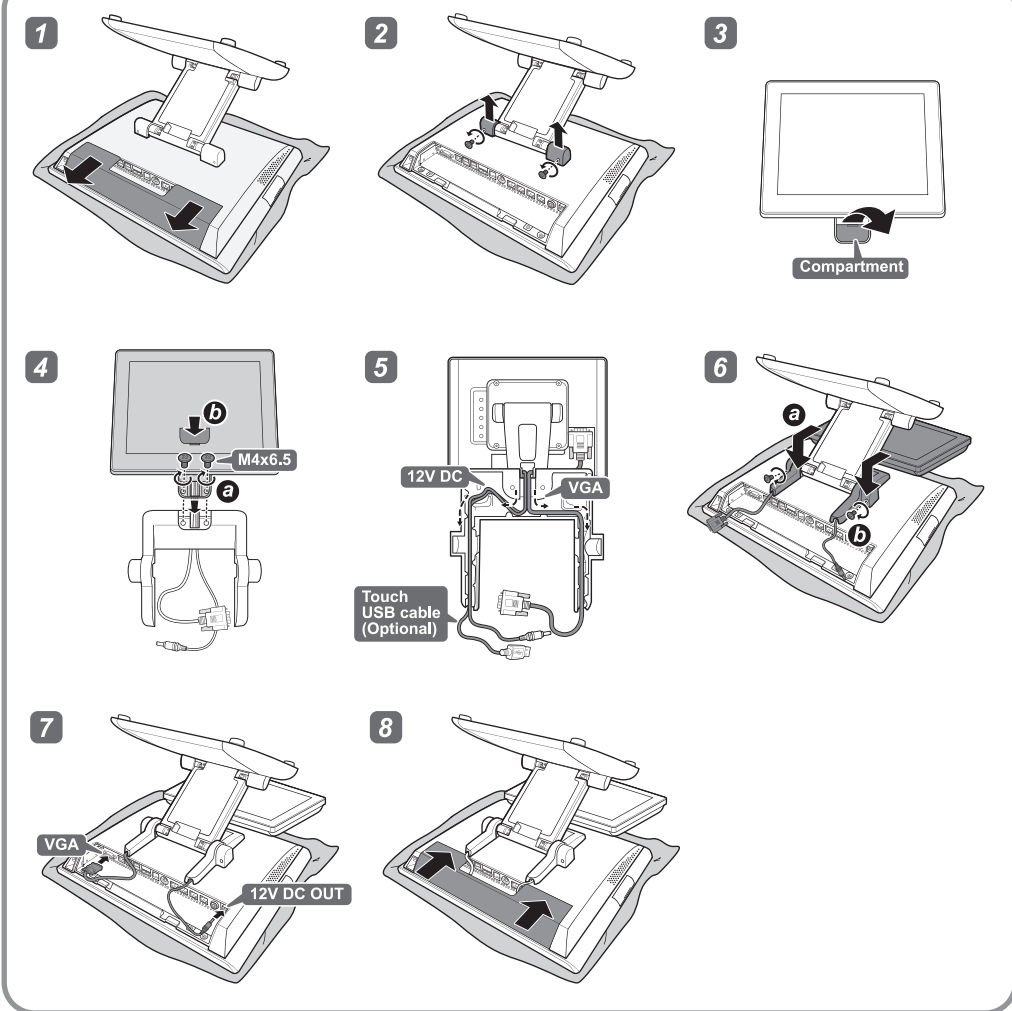
### Installing the Second Hard Disk Drive (Optional)



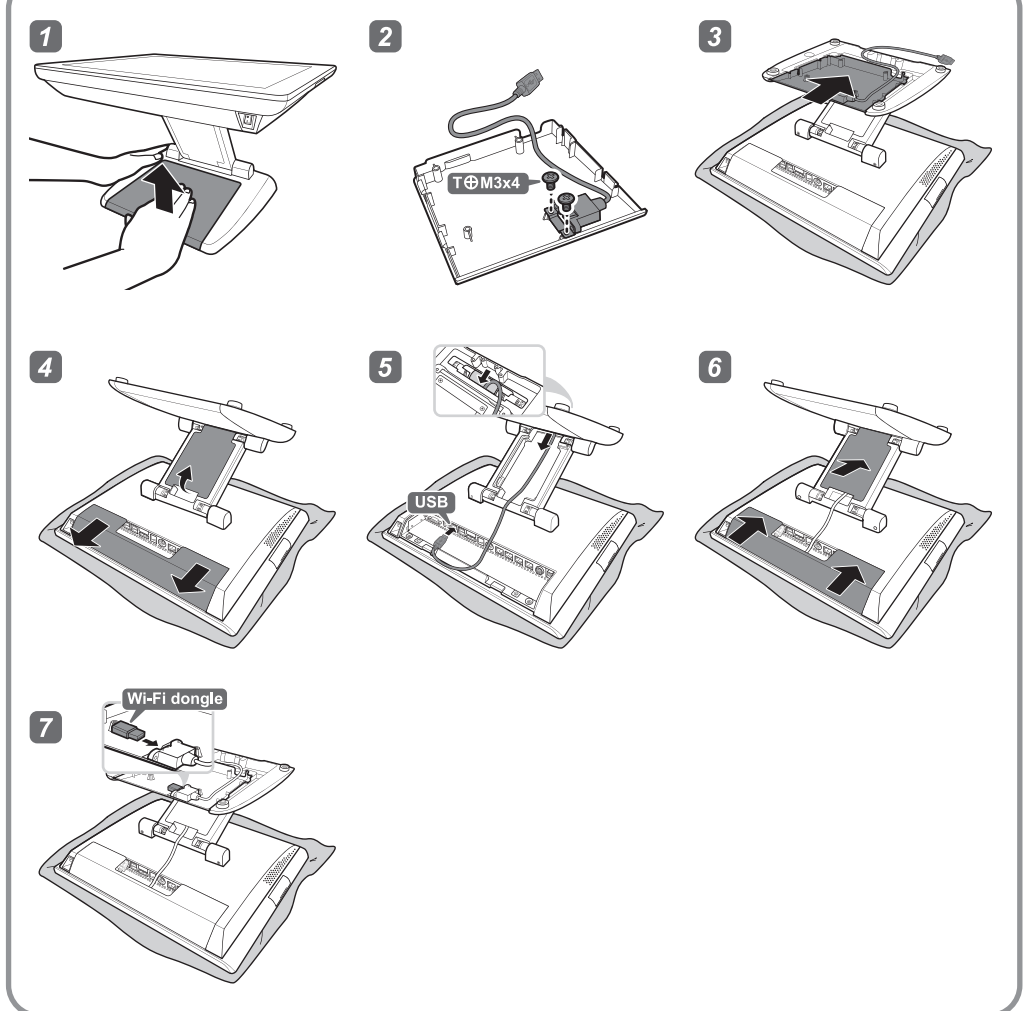
### Installing the Customer Display (Optional)



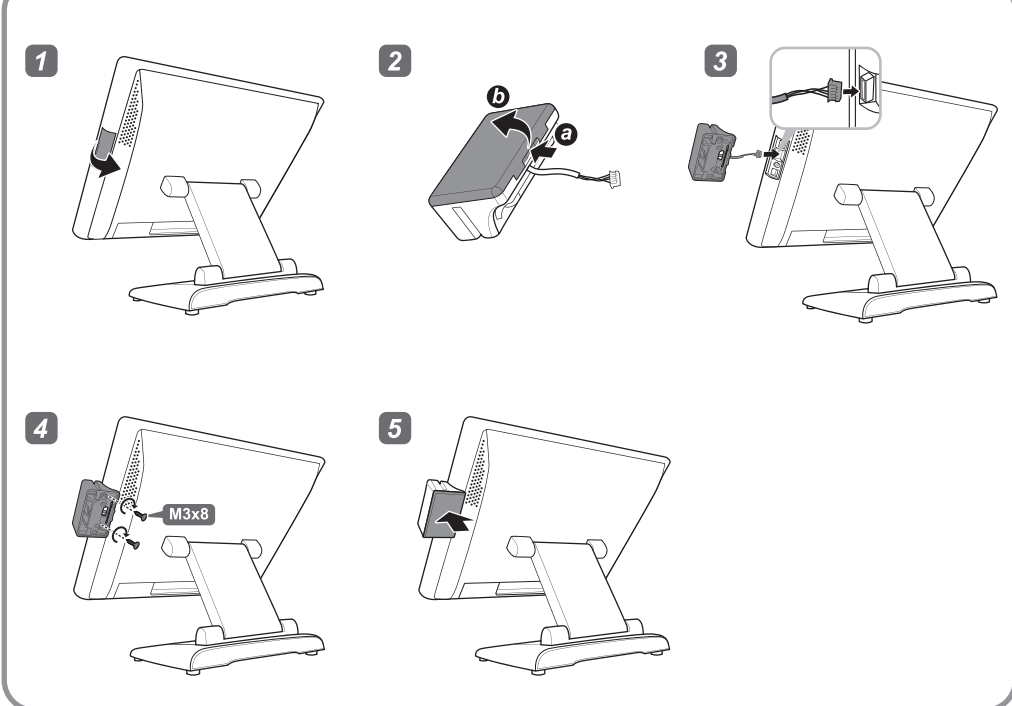
### Installing the Second LCD Display (Optional)



### Installing the Wireless Module (Optional)



### Installing the Identification Reader (Optional)



### Installing the VESA mount (Optional)

